



BESS S-01

Automatic
SSD Shredder

User Manual vA.01



Index

Product Disclaimer3
Warranty3
Piracy Statement3
Before You Start4
Notice Symbols4
Product Overview5
Daily Inspection.....6
Periodic Inspection (Around Every 6 Months)7

Product Disclaimer

U-Reach is not accountable for any incidental or consequential damages, which includes, but is not constrained to property harm, loss of time or data from use of a U-Reach product, or any other damages attributable to product malfunction or failure (including without limitation, those attributable to: (1) reliance of the materials provided, (2) costs of product replacement, (3) loss of use, data or profits, (4) delays or business interruptions, (5) and any principle of legal responsibility, arising out of or in reference to the use or overall performance or from delays in servicing or lack of ability to render service) of any U-Reach product. U-Reach makes every effort to ensure proper operation of all products. However, the customer is responsible to affirm that out of the U-Reach product meets the customer's quality requirement. The customer further acknowledges that fallacious operation of U-Reach product and/or software program, or hardware issues, can cause loss of data, defective formatting, or data loading. U-Reach will make efforts to resolve or repair any issues recognized by customer either within the warranty period or on a time and materials basis.

Specifications and features subject to change without notice or obligation.

Warranty

U-Reach provides a basic one-year parts and labor warranty for all of its products (excluding cables, adapters, and other consumable items). An optional extended warranty is also available for an added cost. Telephone and email support is available for the life of the product as defined by U-Reach.

All warranties will be restricted and defined by the market region from which customers purchased.

Piracy Statement

U-Reach accepts no responsibility for copyright infringement or misuse of any U-Reach equipment. Copying all forms of data: audio, video, or software without the permission of the copyright holder is illegal. It is the sole responsibility of the user to ensure that the legal copyrights of the copyright owners are respected.

Before You Start

Important Notice

- Carefully read the entire manual before operating.
- Damage incurred due to non-compliance with our operating instructions will void the warranty.
- Store the equipment safely when not in use and keep out of the reach of children.
- Use only approved, stable power sources.
- Use product only in a clean, dry, dust free, and ventilated area. Liquids or foreign debris can severely damage your shredder.
- It is typical for the machine to heat up during operation.
- While in use, do not move the shredder or remove HDDs.
- Wear protective equipment (PPE) to prevent any potential injuries when handling devices.
- Ensure machine and operator are properly grounded to prevent ESD.

Notice Symbols

Special items, procedures, or notes to be observed prior to use.

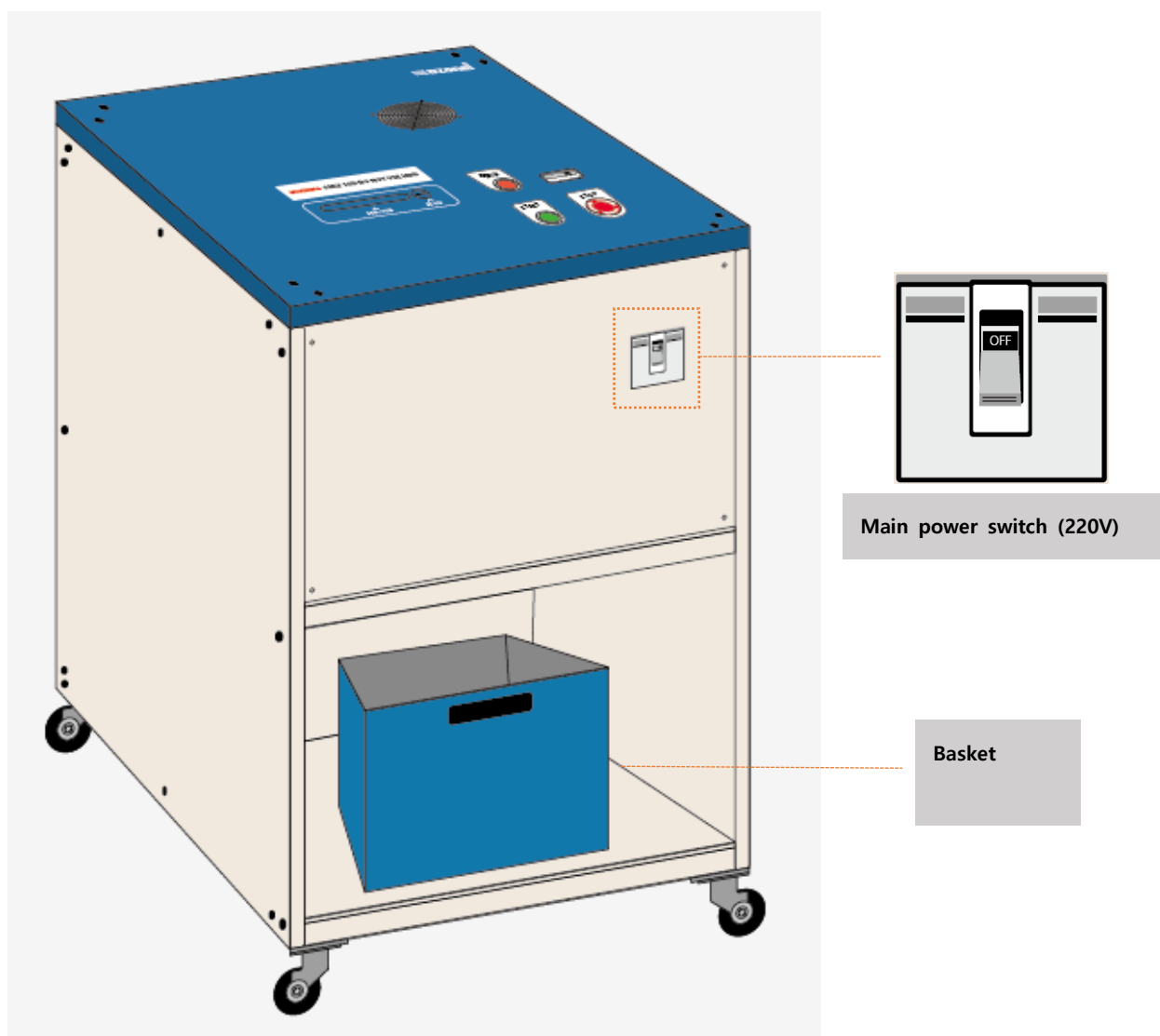
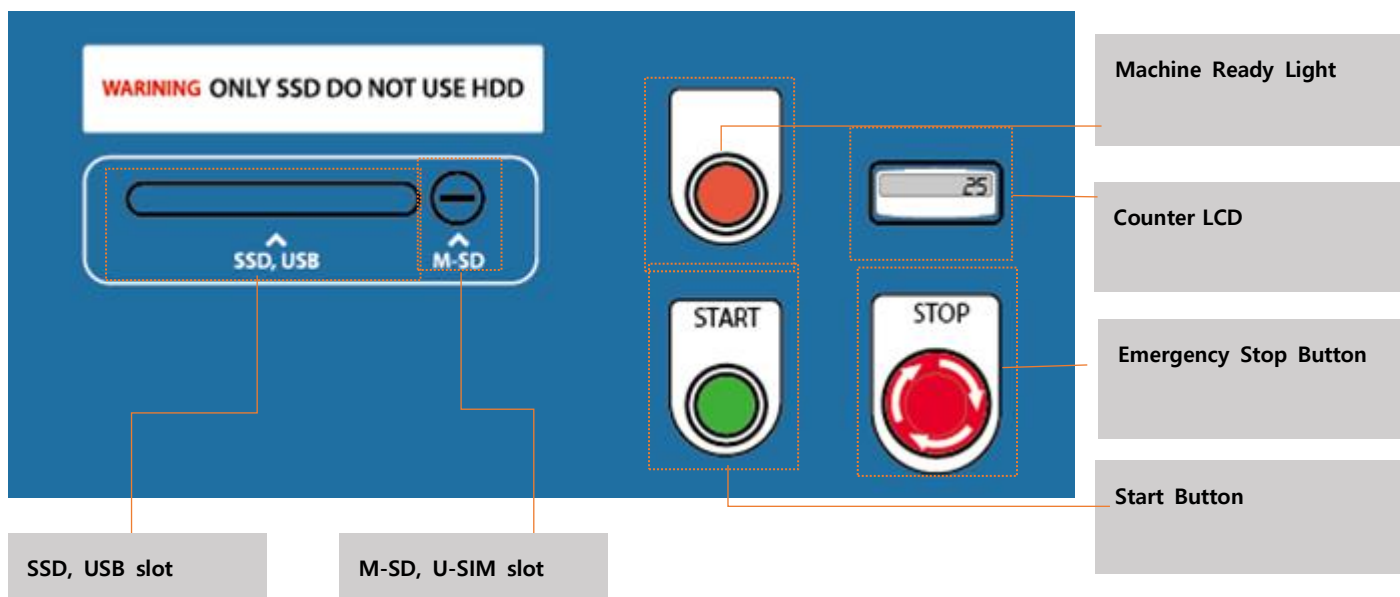
Note

Refers to related duplicator operations, special details, tips, or suggestions for operational effectiveness.

Caution

Refers to procedures that need to be adhered to or precautions.

Product Overview



Note

Please be sure to follow this information as it is intended to prevent danger or damage to property by using the product correctly.

Daily Inspection

<u>Checklist</u>	<u>Inspection Procedure</u>	<u>Actions taken in case of abnormality</u>
Is the emergency stop switch working?	<ol style="list-style-type: none"> 1. Press the emergency stop switch 2. The motor stops when the switch is pressed. 3. When the switch is pressed, the switch is pressed and held. 	<ul style="list-style-type: none"> - When the emergency switch is pressed, the push/stop state is normal - Replace in case of abnormality
Is the motor operating normally?	<ol style="list-style-type: none"> 1. Press the start switch 2. The motor operates normally and the shredding blade rotates. 3. The motor automatically stops after 40 seconds. 	<ul style="list-style-type: none"> - When the start switch is pressed, the motor rotates and automatically stops after 40 seconds of idling. - Contact Customer Support if automatic stop does not occur
Whether each switch and lights works	<ol style="list-style-type: none"> 1. Whether the green lamp lights up when the motor starts 2. Whether the disc input possible lamp is on or not 	<ul style="list-style-type: none"> - Green lamp lights up when the motor starts. - The disc insertion possible lamp lights up when the light switch is first turned "ON" , then turns "OFF" when the disc is inserted, and lights up again after 5 seconds.
Is the cooling fan working?	<ol style="list-style-type: none"> 1. Whether the cooling fan (top) operates when power is applied. 	<ul style="list-style-type: none"> - When the motor operation switch is turned "ON" , the fan motor rotates with a fan motor rotation sound. - Contact Customer Support if it does not rotate

Note

Please be sure to follow this information as it is intended to prevent danger or damage to property by using the product correctly.

Periodic Inspection (Around Every 6 Months)

<u>Checklist</u>	<u>Inspection Procedure</u>	<u>Actions taken in case of abnormality</u>
Shapes of Crushed Chips	<ol style="list-style-type: none"> 1. Observation of the shape of the crushed chips in the lower crushed chip storage box of the crusher 2. The normal shape of the shredded chip is a square measuring approximately 8mm x 8mm. 3. The ideal shape of shredded chips is that the chips are not broken into pieces or are connected in an elongated shape. 	<ul style="list-style-type: none"> - If the shape of the shredding chips is abnormal, there is a high possibility that the blades of the shredding blades are worn. - Customer Support request
Number and time of motor reversals	<ol style="list-style-type: none"> 1. Check whether the number of motor reversals has increased compared to before. 2. Check whether the rotation does not reverse and stops when the motor receives a load. 	<ul style="list-style-type: none"> - If the number of reversals of the motor increases, the blades of the shredding blades are likely to be worn. - Customer Support request
Is the disk detection sensor working?	<ol style="list-style-type: none"> 1. Insert the shredding disk into the inlet. 2. Check whether the shredding counter counts up. 	<ul style="list-style-type: none"> - If there is a problem with the shredding disk detection sensor, the counter does not operate and the input availability lamp does not turn on/off. - Customer Support request
Whether the motor is reversed or not	<ol style="list-style-type: none"> 1. When a motor overload occurs, the rotation of the motor is automatically reversed to protect the circuit in the event of a motor overload. 	<ul style="list-style-type: none"> - If the motor stops without being reversed, it may cause failure due to overload. - Customer Support request

Note

Please be sure to follow this information as it is intended to prevent danger or damage to property by using the product correctly.

Specifications are subject to change without notice.